



林子恩 教授

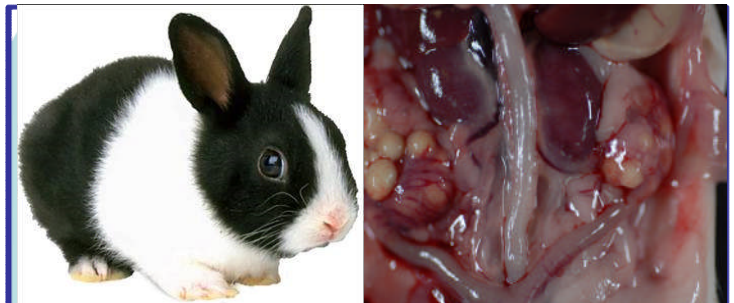
基礎醫學研究所

實驗動物中心

(Laboratory Animal Center)

**Specialty :**

**Identification and control of animal diseases in veterinary microbiology, Management and disease control of laboratory animals, Animal model applications for cardiovascular diseases**



實驗動物飼養管理及使用

動物疾病控制及動物模式之建立



**Publication:**

1. Shin-Da Lee, Li-Ming Chen, Wei-Wen Kuo, Win-Tom Shu, James A Lin, Chu-Ming Huang, Min-Chi Lu, Wu-Heien Kuo, Ter-Hsin Chen, Chih-Yang Huang. Serum Interleukin-10, Insulin-like growth factor-axis and MMPs in the patients with rheumatic heart disease and acute rheumatoid arthritis. *Clinica Chima Acta*. 2006. 367(1-2): 62-8.
2. Lee SD, Kuo WW, Lin JA, Chu YF, Wang CK, Yeh YL, Chang MH, Wang SG, Liu JY, Huang CY. Effects of long-term intermittent hypoxia on Mitochondrial and Fas death receptor dependent apoptotic pathways in rat hearts. *International Journal of Cardiology*, 2007, 116(3): 348-56.
3. Der-Jinn, Wu, James A. Lin\*, and Cheng-Sheng Lin. Reduction of dilated cardiomyopathy of broiler chickens model by pharmacological treatments- pathological aspect. *Taiwan Vet J*. 2007, 33: 6-13. (\*Corresponding author)
4. Lu MC\*, Kuo WW, Bor-Show Tzang, Wu FL, Chen SH, Liu JY, Hwang JM, Lin JA, Chen JS, Huang CY\*, Lee SD\*. More activated cardiac mitochondrial dependent apoptotic pathway in obese Zucker rat. *Obesity Research*, 2007; 15; 2634-2642.
5. Hwang JM, Weng YJ, Lin JA, Bau DT, Ko FY, Tsai FJ, Tsai CH, Wu CH, Lin PC, Huang CY, Kuo WW. Hypoxia-induced compensatory effect as related to Shh and HIF-1alpha in ischemia embryo rat heart. *Mol Cell Biochem*. 2008. Apr; 311 (1-2): 179-87.
6. Chu CH, Tzang BS, Chen LM, Liu CJ, Tsai FJ, Tsai CH, Lin JA, Bau DT, Kuo WW, Huang CY. Specific Activated IGF2R Induces Mitochondria-dependent Apoptosis through G q and Downstream Calcineurin Signaling in Myocardial Cells. *Endocrinology*. 2008 Dec 18.
7. Chun-Hsien Chu\*, Chih-Yang Huang\*, Ming-Chin Lu\*, James A. Lin, Fuu-Jen Tsai, Chang-Hai Tsai, Chia-Yih Chu, Wu-Hsien Kuo, Li-Mien Chen, and Ling-Yun Chen. Enhancement of AG1024-Induced H9c2 Cardiomyoblast Cell Apoptosis via the Interaction of IGF2R with G Proteins and Its Downstream PKA and PLC- Modulators by IGF-II *Chinese Journal of Physiology* 52(1): 1-7, 2009.